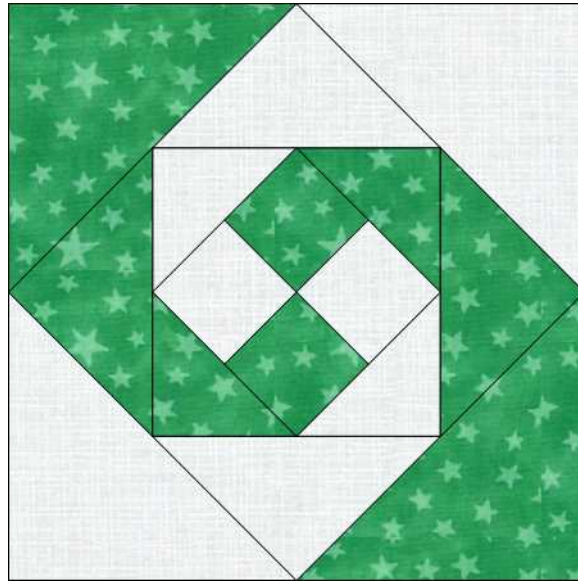


Meadowside Designs



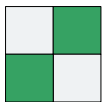
Monkey Wrench

Block size: 8 inch

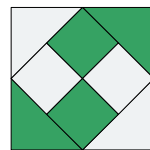
Cutting

From both fabrics cut two $1\frac{7}{8}$ inch squares, one $2\frac{7}{8}$ inch square, one $4\frac{7}{8}$ inch square and one $5\frac{1}{4}$ inch square.

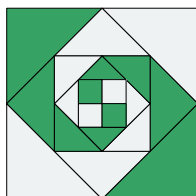
Block



Stitch the four $1\frac{7}{8}$ inch squares together to make the centre 4-patch unit.



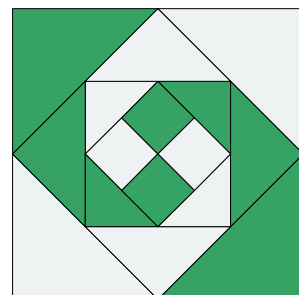
Cut the two $2\frac{7}{8}$ inch squares in half diagonally to make four triangles and stitch these around the 4-patch unit.



Cut the $5\frac{1}{4}$ inch squares in four diagonally and stitch two of each of the triangles to the square (you will have two left-over triangles).

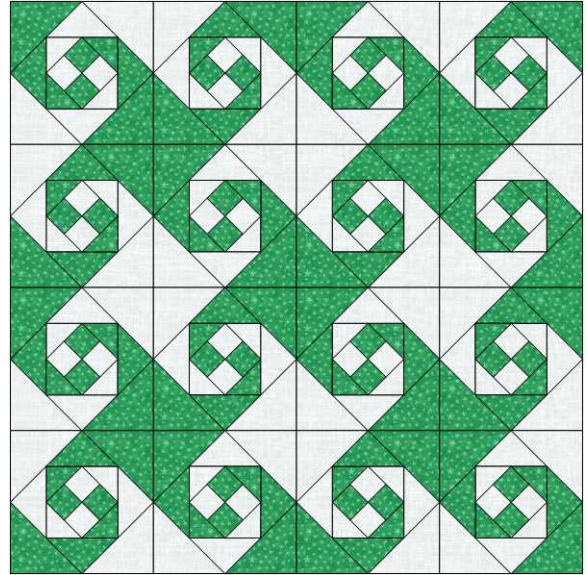
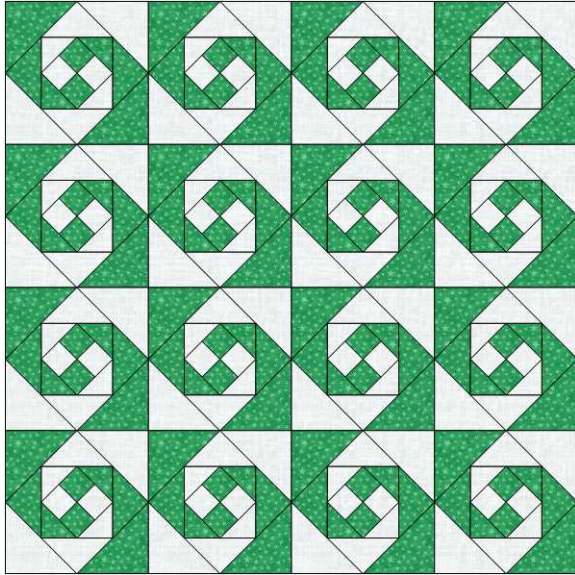
Cut the $4\frac{7}{8}$ inch squares in half diagonally and stitch the triangles to the square to complete the block.

Take care with the sides you stitch each triangle to!

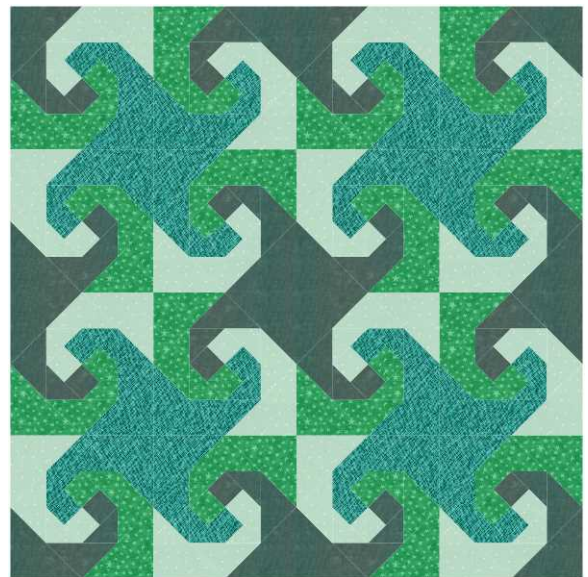
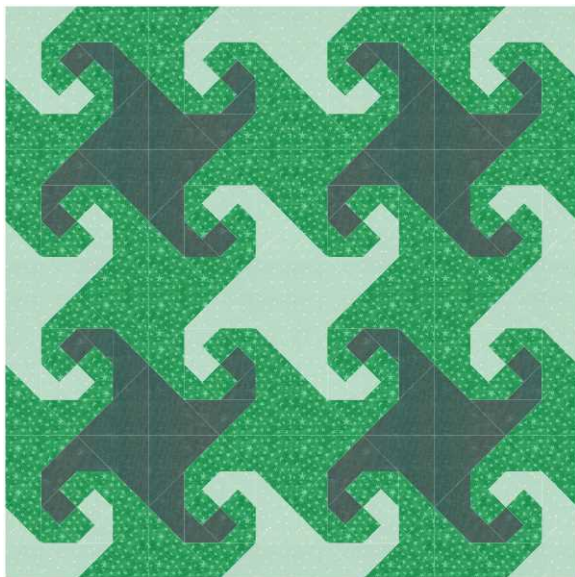


Quilt Ideas

If you just put the blocks together in a straight set they don't look like anything much, but turn them around and you get something quite different.



Now try adding a second or even fourth colour –



You will find a few more ideas in the blog post about this block – click on the link in the Tutorials page under 'Square in a Square'.

© Meadowside Designs, 2018

www.meadsidedesign.wordpress.com