

Meadowside Designs



Five Spot

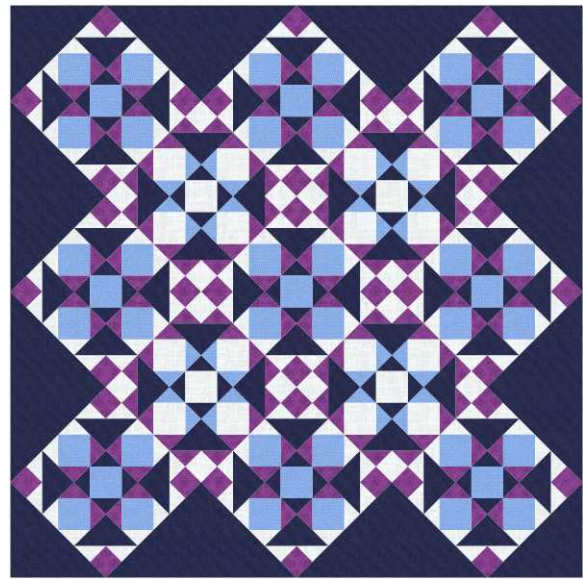
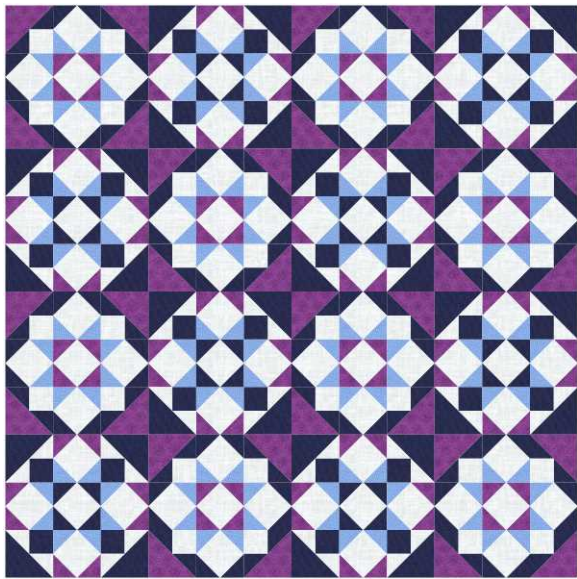
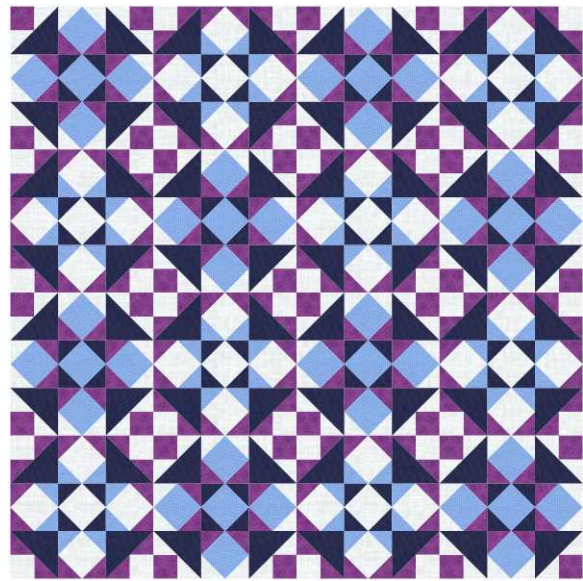
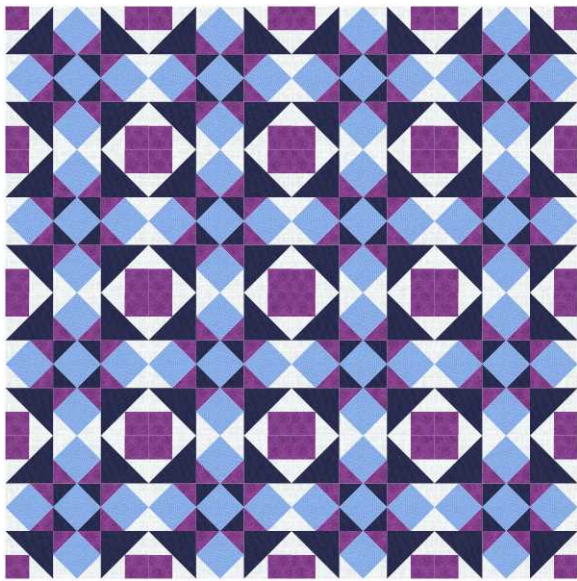
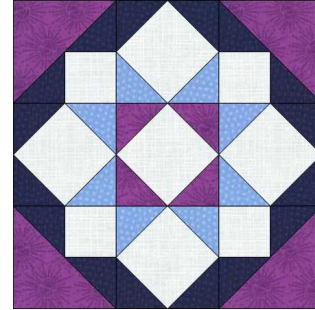
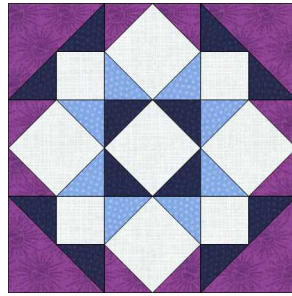
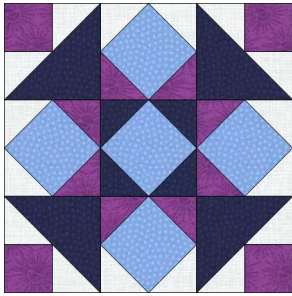
Block size: 12 inches

Cutting – From background cut eight $2\frac{1}{2}$ inch squares and two $2\frac{1}{2}$ x $4\frac{1}{2}$ inch rectangles. From purple cut ten $2\frac{1}{2}$ inch squares. From light blue cut five $4\frac{1}{2}$ inch squares. From dark blue cut two $4\frac{1}{2}$ x $5\frac{1}{2}$ inch rectangles and four $2\frac{1}{2}$ inch squares.

Block – Make four Square & Triangles units using the two at a time method. Make four Square-in-a-Square units with light blue, background and purple squares. Make one Square-in-a-Square unit using light and dark blue. Lay the units out as above. Stitch into three rows of three. Stitch the rows together to complete the block.

Quilt Ideas

The block is symmetrical so turning it around makes no difference. Straight set blocks all in the same colour can look a bit so-so, but try swapping the colours over and alternating the blocks. Or turn the corner units around. Or turn everything on point.



© Meadowside Designs, 2018

www.meadowsidedesign.wordpress.com